



**KABELSCHLEPP: The power to innovate.**

**KABELSCHLEPP**

# Progress in motion: facilitated by a trailblazing innovation.

A production robot which repeats the same cycle of movement 100,000 times daily with the utmost precision; a crane which lifts, lowers and moves loads of several tonnes over a period of years; a spaceship which takes off with incredible force and ascends into the sky. All things that today we take for granted – and yet which are inconceivable without **a dependable moveable energy cable.**

50 years ago a pioneering invention in Siegen, Germany laid the foundations for this: in 1953 the Waldrich machine tool factory registered the **“cantilever chain for the protection of cables and hoses in motion”** for a world-wide patent. The visionary owner of the company, Dr.-Ing. E.h. Oskar Waldrich was quick to see the wider picture and potential and in 1954 founded a subsidiary company for the new product: KABELSCHLEPP. The world-wide success story of the cable carrier had begun.

The rapidly expanding automation of production and treatment processes meant that demand was constantly on the increase. The KABELSCHLEPP principle of providing optimum protection and guidance for cables and hoses in motion knows practically **no limits in terms of application.** Today our solutions can be found for example in semiconductor manufacture and in robot systems, in the automotive industry and in nuclear technology, in machine and plant equipment construction.

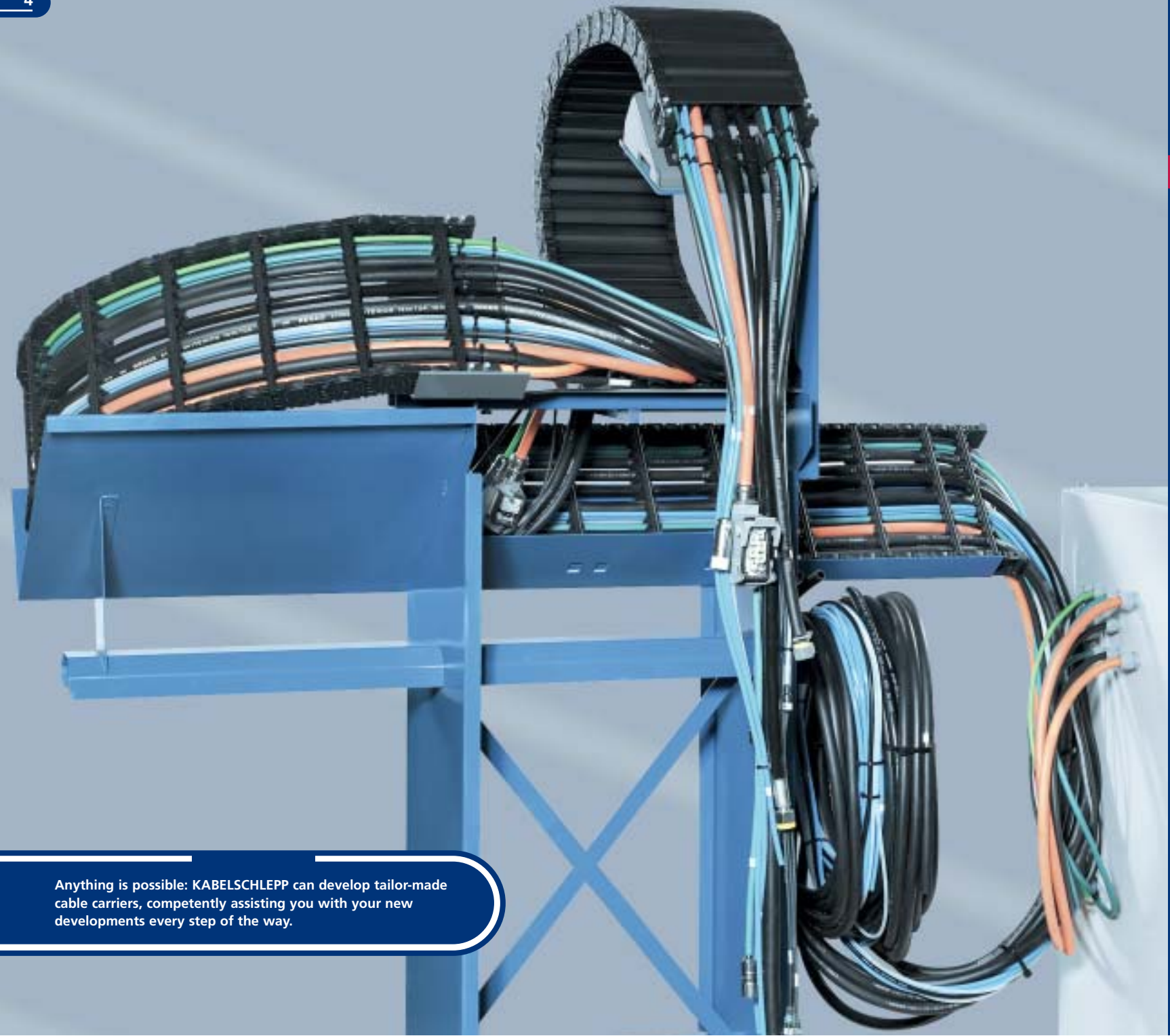
Alongside cable carriers guideway protection and conveyor systems complete the picture, allowing KABELSCHLEPP to guarantee smooth, efficient operation in the most diverse areas.

The family firm KABELSCHLEPP has not only been consolidating its internationally recognised position in the market for decades – as the **inventor of the cable carrier** we set benchmarks for a whole branch of industry. The single definitive standard to which we work and address ourselves on a daily basis is the **satisfaction of our customers.** This we achieve with the most technologically up-to-date products, the constant raising of our standards, and with customer-oriented solutions – from the reliable standard product to an individual complete application solution, which we as your system integrator will produce exactly to meet your specifications.



A detailed view of an industrial machine, likely a lathe or mill, featuring a prominent red rotating table. A complex cable management system is visible, consisting of a black plastic chain with multiple compartments that hold and guide numerous multi-colored cables. The machine is primarily white with grey metallic components. The background is a plain, light-colored wall.

Whether in traditional industry branches or those of the future, KABELSCHLEPP's expertise and innovation take care of your progress in motion.



Anything is possible: KABELSCHLEPP can develop tailor-made cable carriers, competently assisting you with your new developments every step of the way.

# Think outside the box.

## We transmit power to wherever you need it.

Whatever you may be planning, KABELSCHLEPP cable carriers form **the flexible and secure backbone** guiding power and data to mobile machinery of every type. Made to measure in accordance with your requirements, KABELSCHLEPP supplies standard goods of guaranteed quality at short notice from stock as well as individual solutions to your application problems and complete harnessed systems.

The principle is straightforward. You have a requirement – and we have the cable carrier to match it, and can guarantee the **functional safety** which is so crucial to the production process. Our scope of supply ranges from small units of only a few millimetres for an inkjet printer to giant chains for oil platforms where the chain weighs several tonnes. We supply steel, high-grade stainless steel and solid plastic cable carriers and plastic cable carriers with aluminium stays, in standard sizes or tailor-made to an individual customer's requirements in millimetre units. There are properties for **all application situations**, for example especially durable, variable in width and for long self-

supporting lengths. Or indeed quiet, lightweight and particularly flexible, or for extreme conditions, for example suitable for clean room environments. All these solutions have one aim: to guarantee the optimal operation of a system by the **smooth supply of power** to it.

Our extensive range of cables also has a contribution to make. **KABELSCHLEPP LIFE-LINE Safety Cables** are the right choice when it comes to the safe supply of power – our extensive expertise in moveable supply lines is encased in every individual cable.

Most importantly of all, however, not only does KABELSCHLEPP supply individual products quickly and economically, but also **TOTALTRAX turn key solutions ready to install**. The cable carrier, cables, plugs, guide trays, strain relief devices and connection components are therefore exactly suited to one another. Thus you can gain the full benefit of the KABELSCHLEPP effect: increased efficiency and economy with solutions from one source.



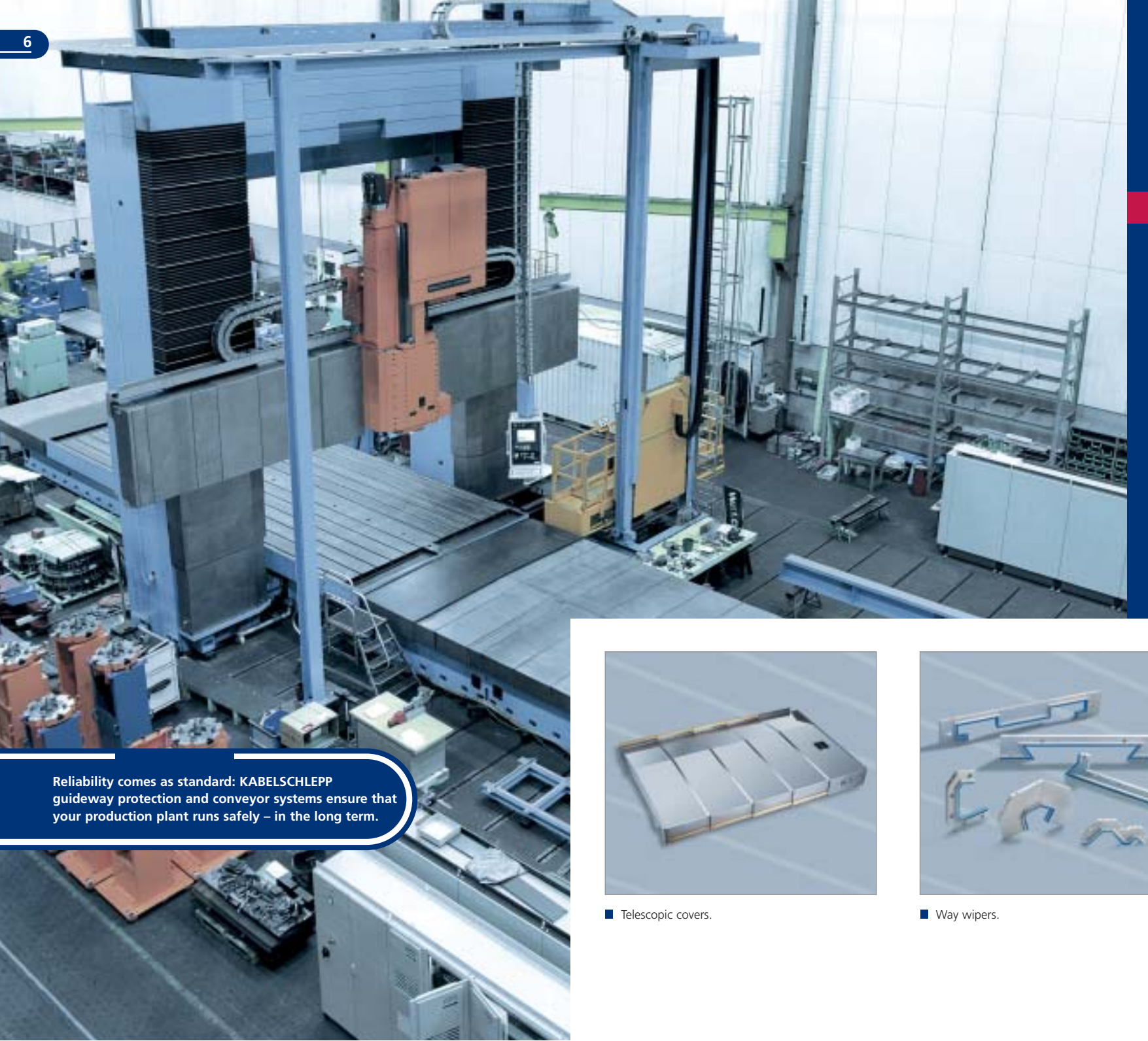
Fully functioning in extreme conditions: KABELSCHLEPP in DASA space travel projects.



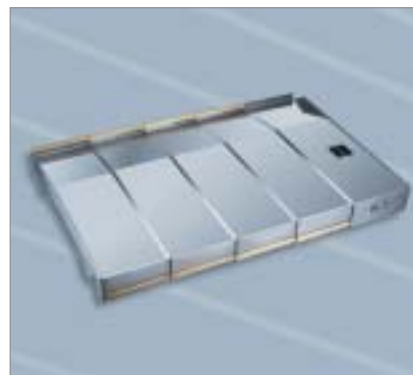
For safe ascent and descent: KABELSCHLEPP cable carriers in the Eiffel Tower, Paris.



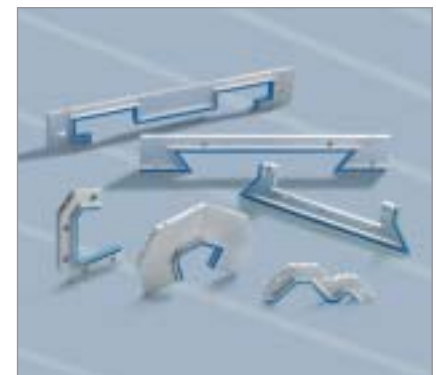
Reliability on the road: KABELSCHLEPP cable carriers in the sliding doors of the Daimler Chrysler Minivan.



Reliability comes as standard: KABELSCHLEPP guideway protection and conveyor systems ensure that your production plant runs safely – in the long term.



■ Telescopic covers.



■ Way wipers.

# Beyond cable carriers: We clear the way!

In modern manufacturing plants the **protection of sliding surfaces and guideways** is of critical importance. Machines have to be able to function accurately and smoothly – only this can guarantee the maintenance of precision, extended service life and the security of your investment.

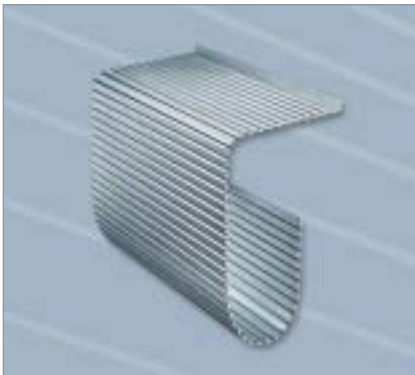
KABELSCHLEPP supplies fully developed, **safe systems** that protect guideways, spindles and axles from contamination and damage. Our guideway protection solutions thus avoid expensive down times and facilitate optimal production processes.

KABELSCHLEPP's scope of achievements encompasses **all the important production areas** – from reliable telescopic covers,

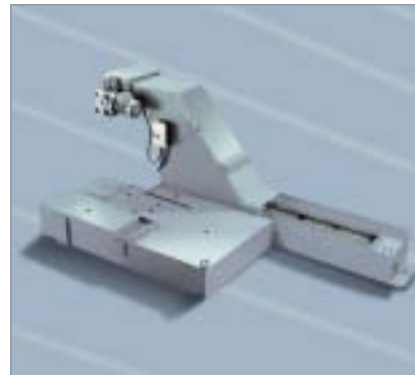
way wipers and link apron covers to bellows, steel spring covers and roller conveyor covers. Our thinking is not defined by what has gone before – if a suitable product for your application does not yet exist, we will develop and construct it. For you this means that even if your guideway is 6 metres wide, the length of travel is 40 metres and extremely high travel speeds are to be achieved, KABELSCHLEPP provides for the necessary protection.

In addition we supply bespoke **customer-specific conveyor systems** for transporting chips, trimmings, metal scrap, forgings, pressings and plastic components etc. Our solutions are designed to adapt flexibly to the site conditions. Whatever the type of material to be conveyed, KABELSCHLEPP can take care of its safe, smooth transport.

For all your design requirements, KABELSCHLEPP's guideway protection and conveyor systems are synonymous with **efficient, uninterrupted manufacturing processes**.



■ Link apron covers.



■ Conveyor systems.

# More vision and greater advances. You should expect nothing less from the original.

From the inspiration to the innovation. This is a special part of our company culture, precisely because KABELSCHLEPP itself developed out of an invention. The continual development work carried out by our **Research and Engineering Teams** enables us constantly to set new standards with our intelligent innovations, even in the competitive global market. We thus always have a suitable answer to the challenges of new technology and modern developments in automated engineering, with for example solutions and materials which make your operations faster, quieter, cleaner and safer – thus increasing the service life of your machines and plant.

One of many examples of our recognised innovative strength is **KABELSKATE**. With this solution cable carriers can operate over travel distances of up to 500 metres and more. A special design means that the frictional resistance and noise emissions are redu-

ced to a minimum: an ideal solution e.g. for future markets such as automated container cranes or port terminals.

**ROBOTRAX** is a further important innovation. This cable carrier mobile in three dimensions permits robots to guide cables safely with almost unrestricted freedom of movement. Our link-free **QUANTUM** range also offers numerous benefits: the system is particularly quiet, and polygon effects are almost completely avoided.

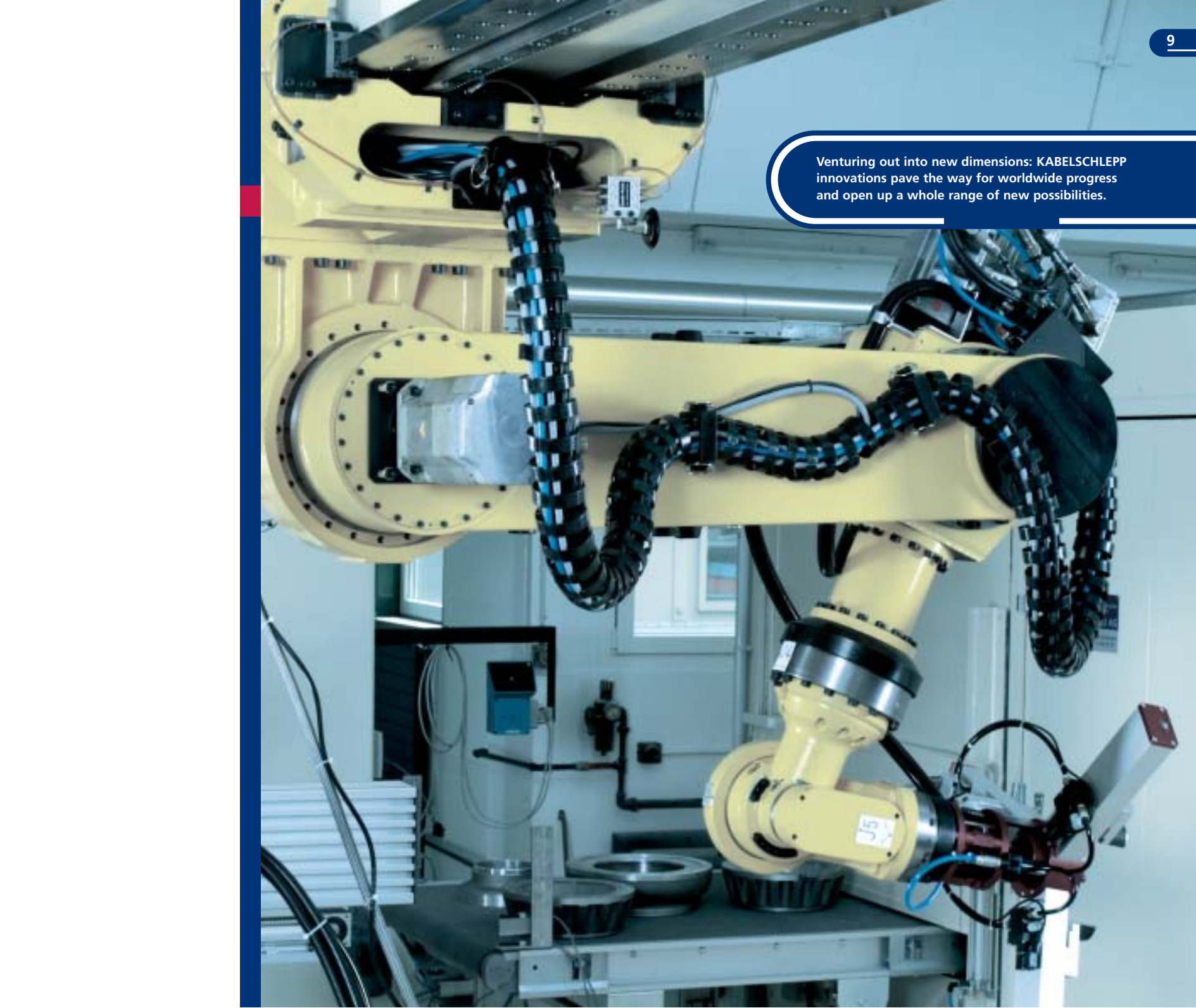
With its constant innovations and improvements KABELSCHLEPP is continually contributing to progress in its field – and to our customers' advances against the competition.



Cable carrying can be this quiet: The link-free Quantum range, in combination here with KABELSKATE, is a typical example of KABELSCHLEPP's innovative strength.

## Milestones: important KABELSCHLEPP innovations, e.g.

- 1953 Invention of the steel drag chain
- 1967 Invention of the plastic cable carrier / MONO
- 1990 Development of the variable-width M-Series
- 1999 Development of the link-free QUANTUM cable carrier
- 2002 Invention of ROBOTRAX, the cable carrier mobile in 3D
- 2004 Development of the MASTER Series

A yellow industrial robotic arm is shown in a factory setting. The arm is equipped with a blue and black cable chain that runs along its length. The arm is positioned over a workbench with various components and tools. The background shows a typical industrial environment with a window and some equipment.

Venturing out into new dimensions: KABELSCHLEPP innovations pave the way for worldwide progress and open up a whole range of new possibilities.



Safe as houses: With KABELSCHLEPP'S high quality your installations can work to their maximum economic potential and efficiency.

# We give of our best for your projects: Quality Engineering from KABELSCHLEPP.

Quality from KABELSCHLEPP is the result of extensive expertise, **50 years' experience** and the high standards which our founding company H.A. Waldrich brought to the establishment. When it comes to our high quality craftsmanship, whether in the research, production, service or sales departments, we regard our **employees** as our most indispensable asset. Low staff turnover and high levels of motivation drive the employees and the company forward, and this is also reflected in our focussed marketing. Experience-based **training** and ongoing **study** in accordance with individual learning schedules guarantee in the long term the level of competence that our customers have rightly come to expect from KABELSCHLEPP.

We are also constantly investing in KABELSCHLEPP's guaranteed high product quality. Our company is certified to EN ISO 9001:2000, many of our products are TÜV-approved and it goes without saying that KABELSCHLEPP meets all current global safety standards.

KABELSCHLEPP products prove their worth by their very **long service life**. The foundations for this are laid on the one hand by our use of first-class materials which are selected strictly in line with our individual customers' requirements and to meet market demands, and which are constantly being improved by ongoing research and development, and on the other by their precise treatment. Our customers draw long-term benefits from this meticulous two-pronged approach: thus it is that various

KABELSCHLEPP cable carrier systems have already achieved more than 50 million cycles of movement, with the hallmark of security for the machine and its operator.

From the automotive industry via nuclear technology to offshore and outer space – the fact that our systems are used in the industries with the **highest demands and safety standards** is for us the best proof of quality.



Not only do big solutions require big ideas, but also an awareness of quality down to the minutest detail. Inclusive of reliability and punctual delivery.

# For your applications, we get everything moving.

For KABELSCHLEPP support and service are not merely necessary elements of a business relationship – they are cornerstones of our philosophy: KABELSCHLEPP's **consultancy and service** are as flexible, individual and personal as our products.

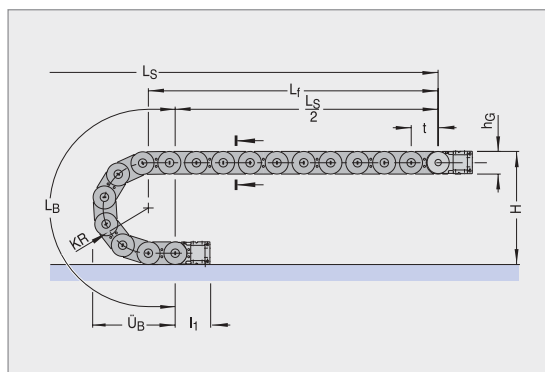
You can experience this for yourself at every stage of our cooperation. Even at the initial consultation stage KABELSCHLEPP combines the development engineer's theoretical approach with the customer's practical viewpoints. This process continues seamlessly once the product is in use. Irrespective of where you are in the world, you can at any time rely on local support, inclusive of a **24-hour consultancy service**, and with **specialists on the spot**.

From a mere single product delivery to the preparation of a ready-to-install unit to a bespoke complete solution with installation and commissioning included – it is up to you to decide our level of involvement. If you so desire we can guide your project from its planning phase right through to maintenance. And if you are unable to estimate accurately what level of support is most appropriate for you, we can even advise you individually on this.

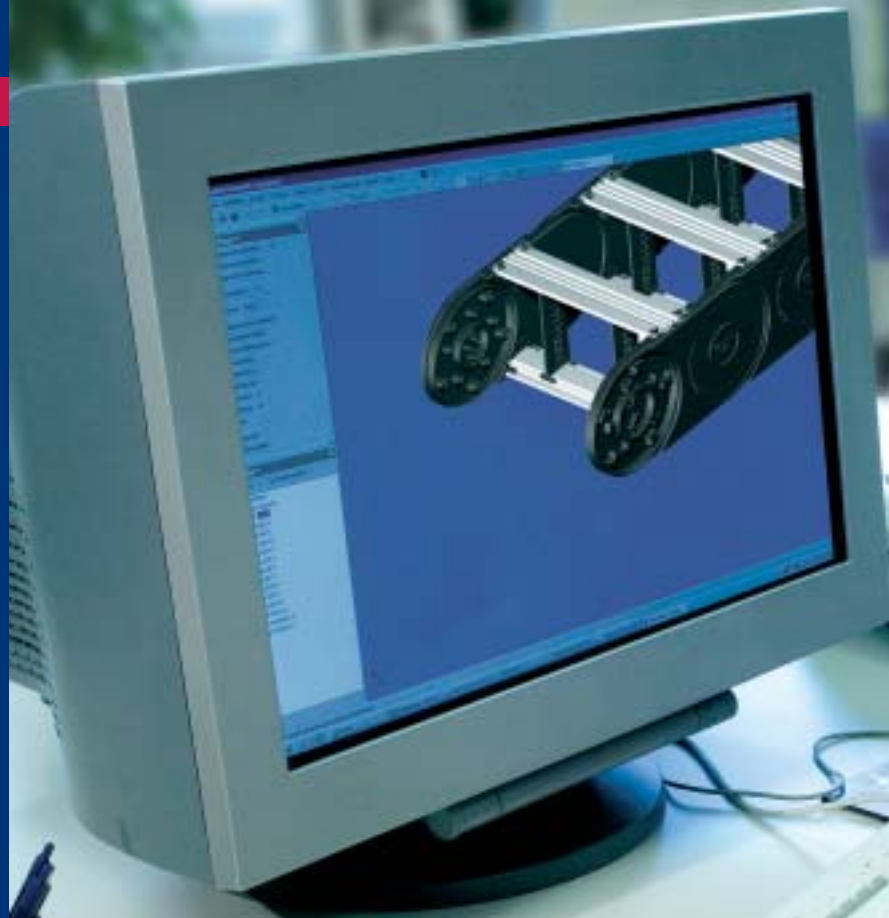
In order to guarantee the best possible support, we believe in a close relationship with our customers right from the outset. **Your contact** in our sales department will be dedicated to the task of explaining any unresolved questions, informing you of our service, accommodating any changes to your requirements which may be in your interest and much, much more. He or she will also co-ordinate the technical after-sales service so that all the support and service activities run smoothly and with the minimum of fuss.

It is not only from our **cable carrier solutions** that you can expect optimum service, but also of course from our **guideway protection and conveyor systems**. It was for this that we founded our own subsidiary company in Hünsborn – a service centre for everything to do with installation, maintenance and repair. And since good service is linked to speed of response, we can deliver goods from all our product areas in the shortest times. In our **central warehouse** we have 100,000 parts in stock ready to meet your requirements.


Of one thing you can therefore be sure: with KABELSCHLEPP you are always well equipped.



2- and 3-D drawings of our products are available to you online at: [www.kabelschlepp.de](http://www.kabelschlepp.de).



Regardless of when and where you need us – we are always there for you, whether with our comprehensive telephone consultation, innovative online services or the extensive expertise of our specialists.



You will find KABELSCHLEPP everywhere  
that you need us – both in Germany  
and internationally.

# Everything revolves around your success, all around the world.

Today just as 50 years ago, KABELSCHLEPP's heart is in Siegen, Germany. From our headquarters and via our agencies we are available for all our customers in the shortest of times.

Yet KABELSCHLEPP solutions do not recognise national borders: 75% of our products are used abroad, and our company is present around the world, from the growth market China to the USA. With a total of **11 subsidiary companies**, approximately 50 agencies, numerous partners and selected licensees and **700 employees** throughout the globe, which has important benefits for our customers. If e.g. you trade or manufacture in Asia, it is good to know that KABELSCHLEPP is there for you on the spot. In this way short routes to solutions and close co-operation are guaranteed at any time – as is the fact that all those involved will be speaking the same language.

At the same time a **local presence** makes it easier to adapt our products and services to local conditions. Yet irrespective of whether in Asia, South America or Eastern Europe, the name KABELSCHLEPP stands for our recognised commitment to quality and service.

Jointly successful – regardless of borders: Experience for yourself how KABELSCHLEPP can make this a reality. We will be pleased to hear from you.

Nationally as well as internationally: Our close orientation to the demands and application requirements of our customers has contributed to the enduring success story of KABELSCHLEPP over some 50 years. Likewise our customers and suppliers value the **open co-operation in a spirit of partnership** which is and will remain a non-negotiable part of our company philosophy. These central pillars are the strong foundation on which we have built our position in the global competitive market and will further positively develop it. By being innovative, solution-oriented and service-friendly we will daily and repeatedly move more. Together with you.





**KABELSCHLEPP GmbH**

Marienborner Str. 75  
D-57074 Siegen

Tel.: +49 271 5801-0

Fax: +49 271 5801-220

E-Mail: [info@kabelschlepp.de](mailto:info@kabelschlepp.de)

[www.kabelschlepp.de](http://www.kabelschlepp.de)

**KABELSCHLEPP**